

Max-PAIR

Features and Bug Fixes

Contents

SUBSET OF APPLICATIONS NUMBERS TO WATCH	1
THIRD PARTY APPLICATIONS TO WATCH	1
DOWNLOAD IFW PDF FILES	2
RECEIVING UPDATES BASED ON APPLICATION WITH STATUS CHANGES	2
RECEIVING UPDATES IN EXCEL SHEET AS AN EMAIL ATTACHEMENT	2
HIDE/SHOW BALLOON ALERTS	3
ADDING APPLICATION NUMBERS IN THE NEW USER INTERFACE	3
NEW APPLICATION(S) HIGHTLIGHTED	4
GROUPING THE APPLICATIONS	4
RECEIVING IFW PDF AS AN EMAIL ATTACHEMENT	4
INTEGRATING MAX-PAIR WITH PORTFOLIO MANAGER	5
DOCKET NUMBER IN THE UPDATE EMAIL	5
BUGS AND FIXES	6



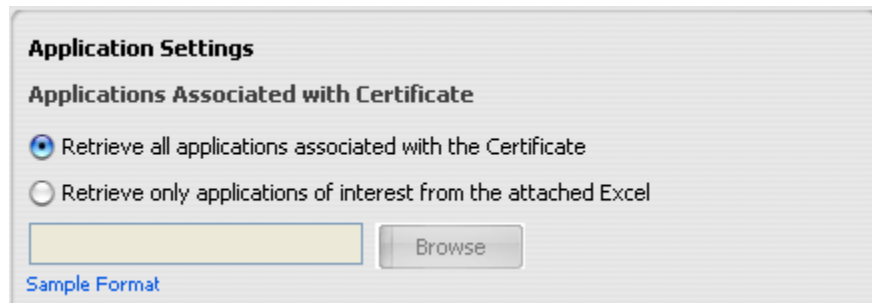
Features of Max-PAIR:

Users can

- ✓ Now add a subset of applications numbers (within the certificate) to watch
- ✓ Add third party application numbers (not associated with the certificate) to watch
- ✓ Download IFW PDF files from the UI (not necessary to login to private PAIR)
- ✓ Receive updates based on application with status changes (faster sync time)
- ✓ Receive updates in Excel sheet as an email attachment (easy to share and integrate)
- ✓ Hide/show balloon alerts
- ✓ Adding the application numbers in the new UI
- ✓ New application(s) highlight option (associated with the certificate)
- ✓ Custom group the application numbers
- ✓ Receive updates in PDF file as an email attachment.
- ✓ Integrating Max-PAIR with Portfolio Manager.
- ✓ Receive the docket number with the update email.

SUBSET OF APPLICATIONS NUMBERS TO WATCH

Instead of watching all the applications associated with a customer number, users can now specify (in an Excel file) a subset of application numbers under a customer number that is of interest to them. See the below image from the settings page.



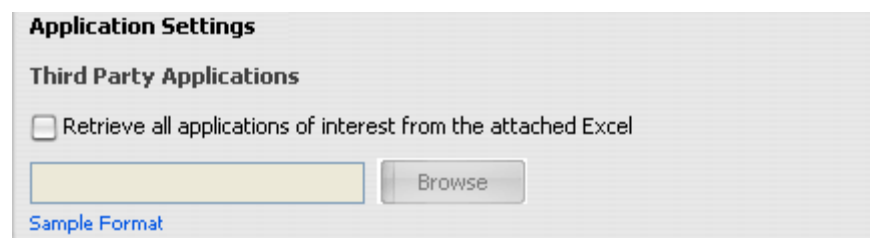
The screenshot shows a dialog box titled "Application Settings" with a sub-section "Applications Associated with Certificate". It contains two radio button options: "Retrieve all applications associated with the Certificate" (which is selected) and "Retrieve only applications of interest from the attached Excel". Below the options is a text input field and a "Browse" button. A "Sample Format" link is visible at the bottom left of the dialog.

Once the program is run, application numbers appear in the unwatched section in the corresponding tab. The user can then further select a sub-set of these applications to the watched status to receive updates.

This feature is very useful when users have hundreds or thousands of (Private PAIR) applications associated with their certificate, but are interested in watching only a sub-set and would like to minimize the initial start-up time that Max-PAIR needs to gather information about the applications.

THIRD PARTY APPLICATIONS TO WATCH

A user can add a list of applications of interest to them- those that are not associated with their certificate (third party applications). After the initial fetching is completed, Public PAIR¹ application numbers appear in the unwatched section in the corresponding tab. The user can then further select a sub-set of these applications to watch. See the image below from the settings page.



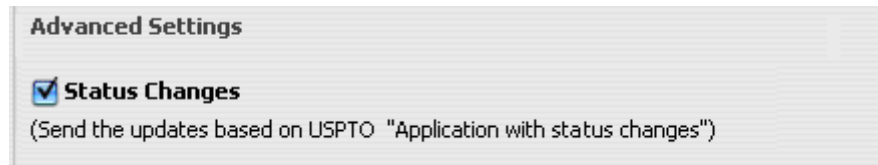
The screenshot shows a dialog box titled "Application Settings" with a sub-section "Third Party Applications". It contains one checkbox option: "Retrieve all applications of interest from the attached Excel", which is currently unchecked. Below the checkbox is a text input field and a "Browse" button. A "Sample Format" link is visible at the bottom left of the dialog.

DOWNLOAD IFW PDF FILES

Users can download IFW PDF file(s) by selecting the check box and clicking the PDF Download button in the IFW Documents tab. It could be opened in the PDF format; optionally, users can save it to their local drive.

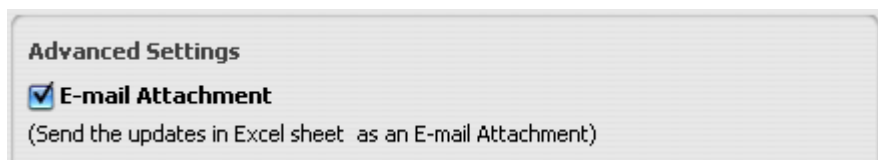
RECEIVING UPDATES BASED ON APPLICATION WITH STATUS CHANGES

This is the optional setting in the Max-PAIR tool to minimize the applications fetching time. By choosing this option, users can receive updates mail based on USPTO "Applications with status changes". See the below image from the settings page.



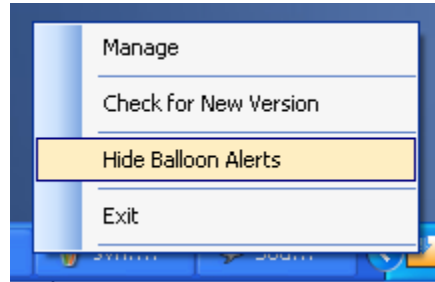
RECEIVING UPDATES IN EXCEL SHEET AS AN EMAIL ATTACHEMENT

This is an optional setting in the Max-PAIR tool, which can be used if user would like to receive updates mails with Excel file attachment. This Excel file will be populated with updates of the particular customer in a predefined format. See the below image from the settings page.



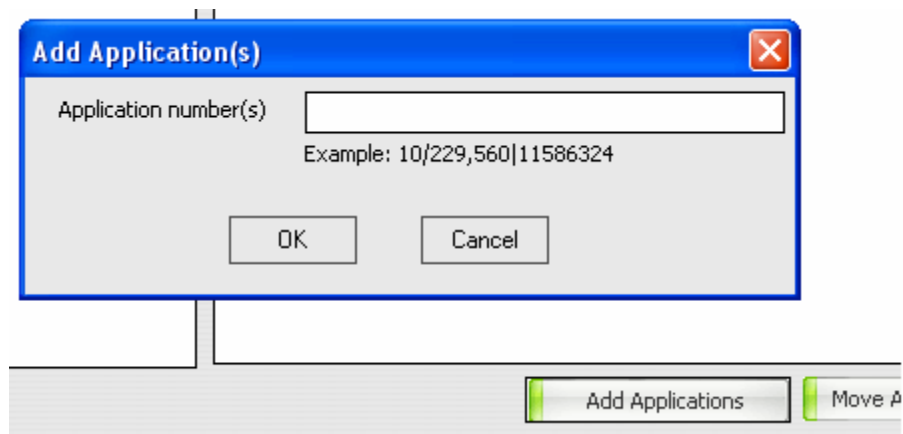
HIDE/SHOW BALLOON ALERTS

Max-PAIR displays various balloon alerts while performing fetch and update activities in the background. It is now possible to hide (or un-hide) these balloon alerts. Right-click on the Max-PAIR icon in the system tray and choose either “Hide Balloon Alerts” (when balloon alerts are active) or “Show Balloon Alerts” option from the menu. See the image below.



ADDING APPLICATION NUMBERS IN THE NEW USER INTERFACE

Users can directly add one or more applications (their own or third parties' applications) using “Add Applications” option.



Once the application numbers are added, they will appear in the unwatched section (in a few minutes, after fetching the details from USPTO).

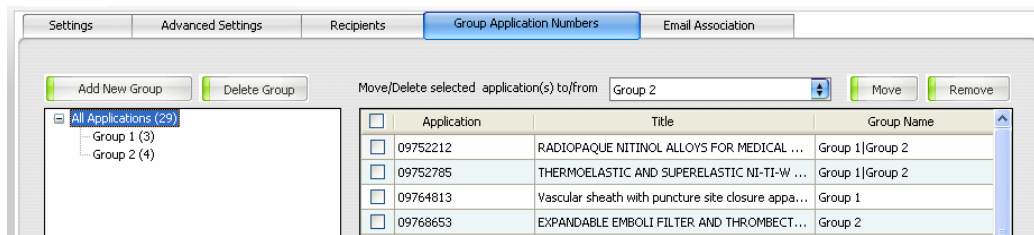
Users can add more than one application using '|' (pipe line) e.g. 10/229,560|11/586,324 (no other special characters are accepted other than comma and back slash).

NEW APPLICATION(S) HIGHLIGHTED

Any new application appearing in Private PAIR (associated with the attached certificate) will be automatically downloaded and added to the “Unwatched Application” list and the newly added applications will be highlighted.

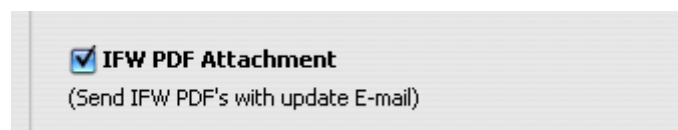
GROUPING THE APPLICATIONS

Users can custom group the application numbers and associated to multiple email IDs.



RECEIVING IFW PDF AS AN EMAIL ATTACHEMENT

This is an optional setting in the Max-PAIR tool, which can be used if the user would like to receive update mail with IFW PDF file attachment. This PDF file will be populated from the USPTO site. See the below image from the advanced settings page.



INTEGRATING Max-PAIR WITH PORTFOLIO MANAGER

PAIR IFW activities from Max-PAIR can be linked to Portfolio Manager (MaxVal DB Service) using advanced settings as shown below

Portfolio Manager Login Details

Username

Password

(Please provide your Portfolio Manager login details if you want to see the private PAIR IFW details in your Portfolio Manager web account. These details will be displayed in "Detail View PAIR" tab.)

DOCKET NUMBER IN THE UPDATE EMAIL

Docket Number information will be sent along with the update email – by default

BUGS AND FIXES

The following bugs are fixed in this release 2.0.1.5

- Highlighting Transaction History in different color. Older version updates in Transaction History and IFW are highlighted in blue.
Version 2.0.1.5 differentiates the updates in Transaction History in green and updates in IFW in blue. User can see this feature in the IFW tab.
- If USPTO updates IFW activities older than a month, update mail is marked with a * for older activities.
- In older Max-PAIR version "IFW PDF Download", user should save the PDF file in their local machine for viewing. In this version (2.0.1.5) it automatically opens the PDF; additionally a "Save As" option is also available.
- For some applications, IFW PDF download option was not working, because of html table changes for those applications. This bug is now fixed in version 2.0.1.5.

The following bugs are fixed in this release 2.0.1.9

- The bug in the pop up while opening the PDF using the Max-PAIR tool "View" tab is now rectified.
- Closing Menu option is now added in the status bar.
- IFW PDF attachments size is limited to 8MB. If the attachment size exceeds 8MB - the alert will be sent without the PDFs.

The following bug is fixed in this release 2.0.2.1

- Bug: System goes into infinite loop trying to download an xml file
Fix: Max-PAIR will now skip that application (that causes the tool to run into an infinite loop) and will continue with the rest of the applications.
These applications (for which the details are not fetched) will be marked distinctly in the alert mail.